

RESUMEN ÚLTIMAS ZAFRAS DEL GRUPO DE TRABAJO DE ARROZ

Sara Riccetto
Gonzalo Zorrilla de San Martín

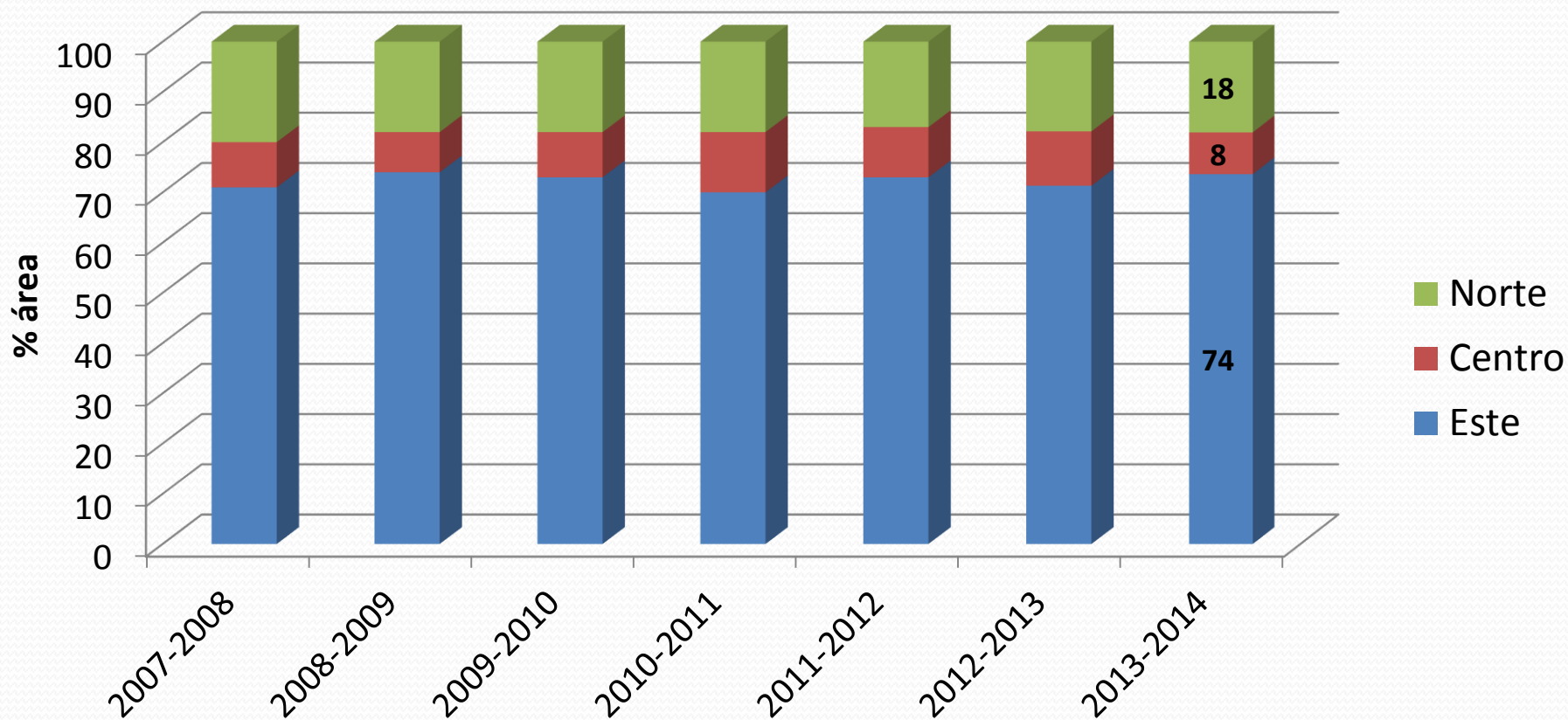
JUNIO 2014

ÁREA RELEVADA

AÑO	ÁREA RELEVADA	% DEL TOTAL (DIEA)*
2007-2008	141317	84
2008-2009	140416	87
2009-2010	141556	87
2010-2011	173180	89
2011-2012	157179	87
2012-2013	150658	87
2013-2014	143564	84

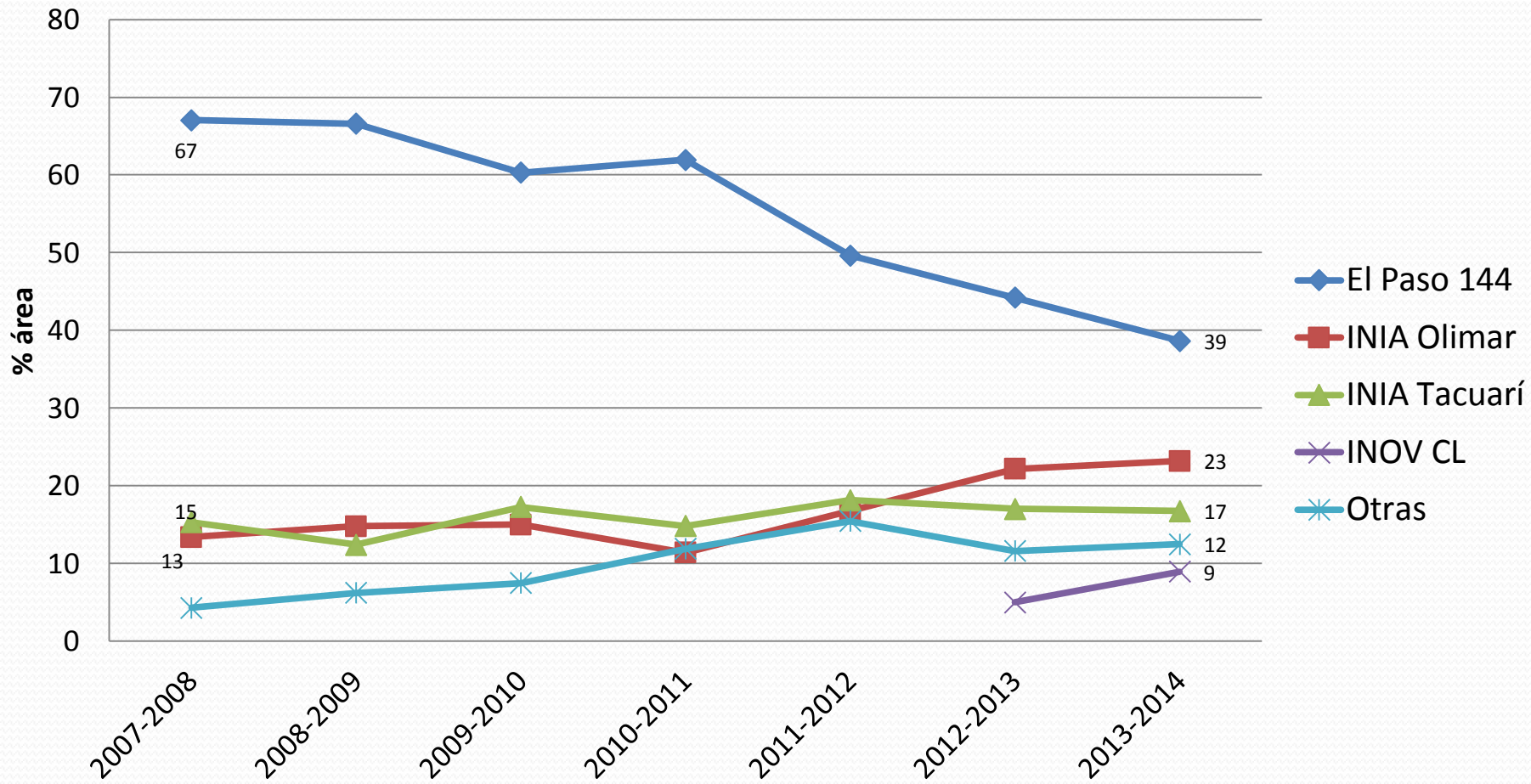
* 2013-14: Comisión Sectorial del Arroz

Distribución del área sembrada

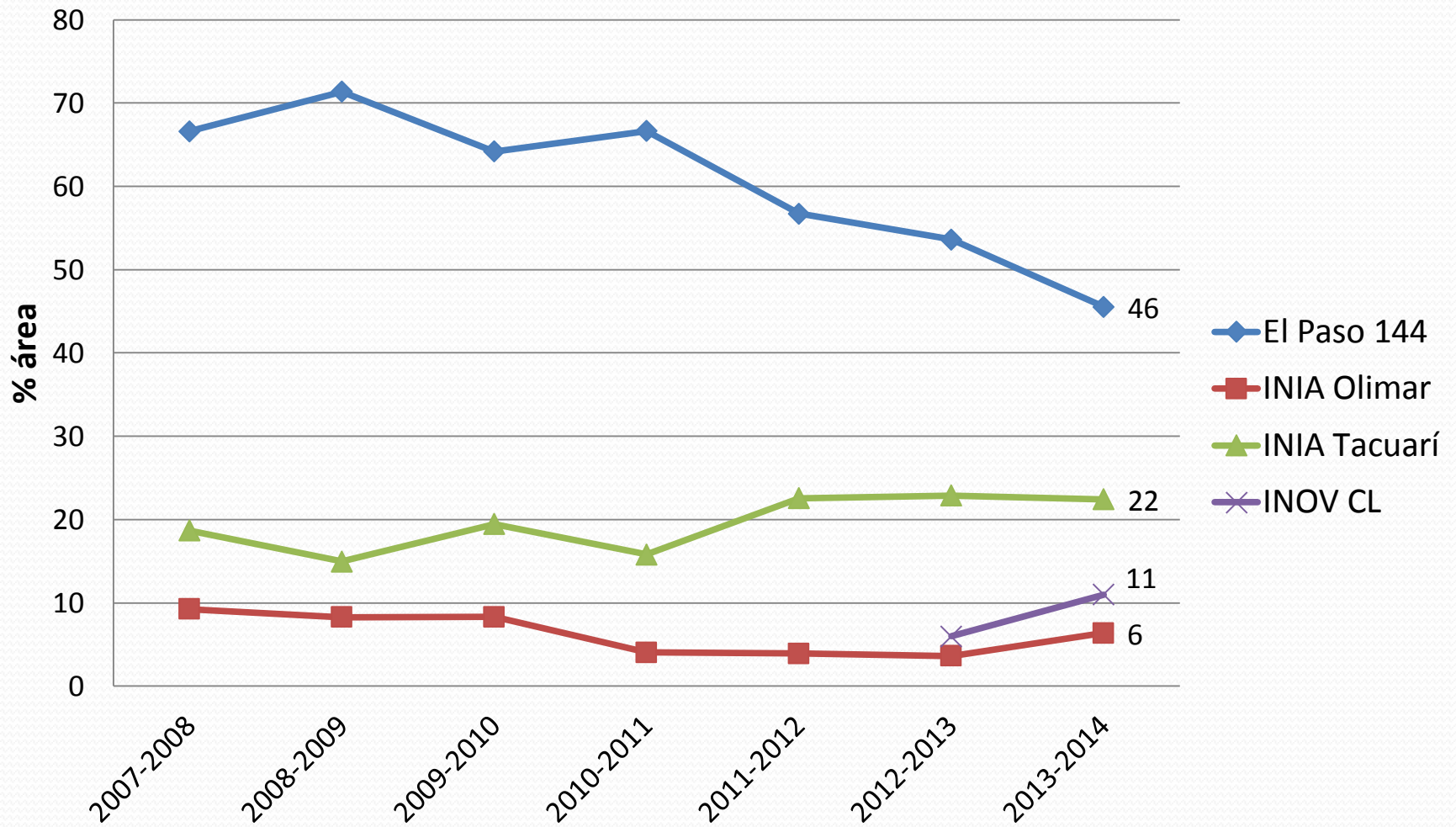


VARIEDADES

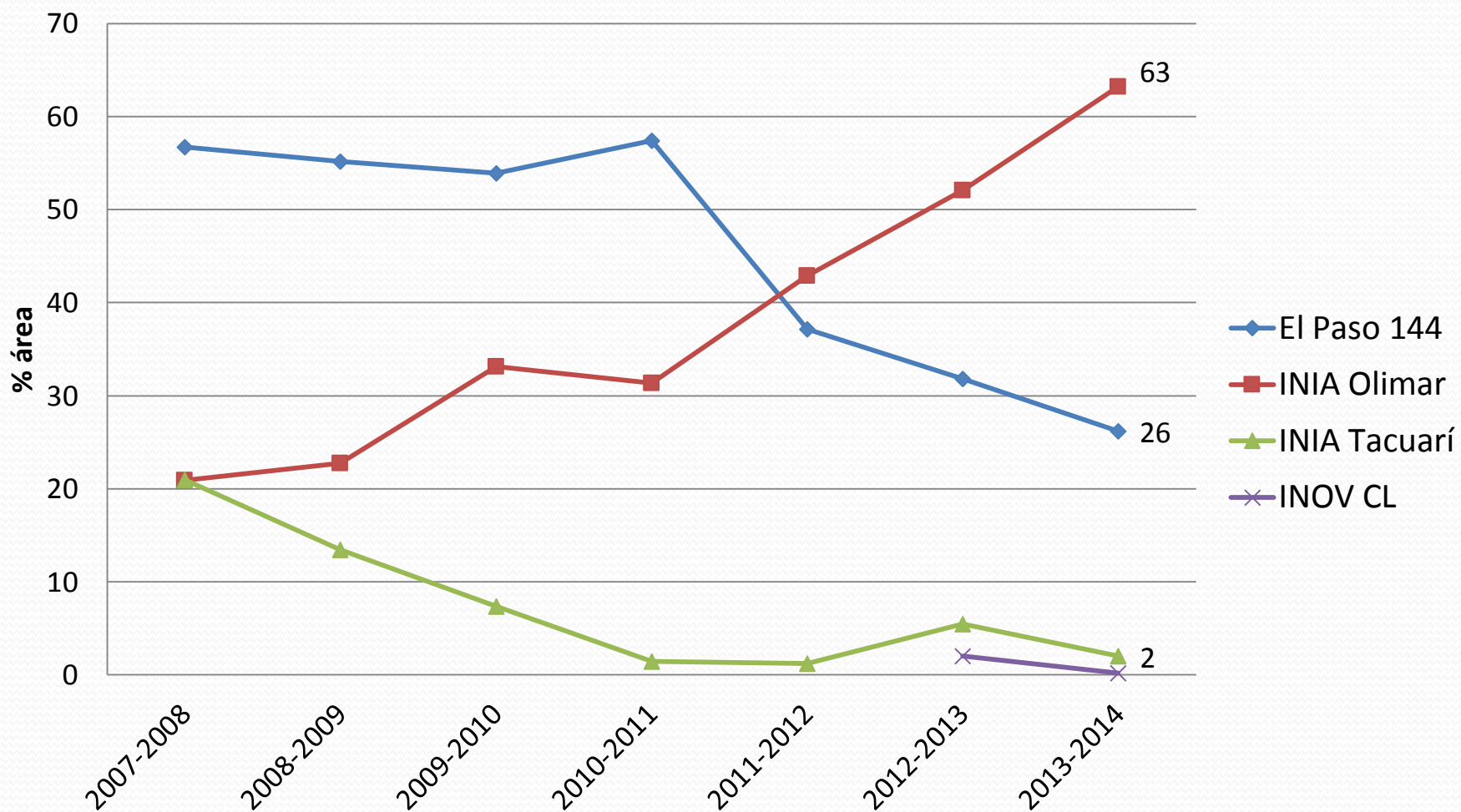
Área sembrada por variedad



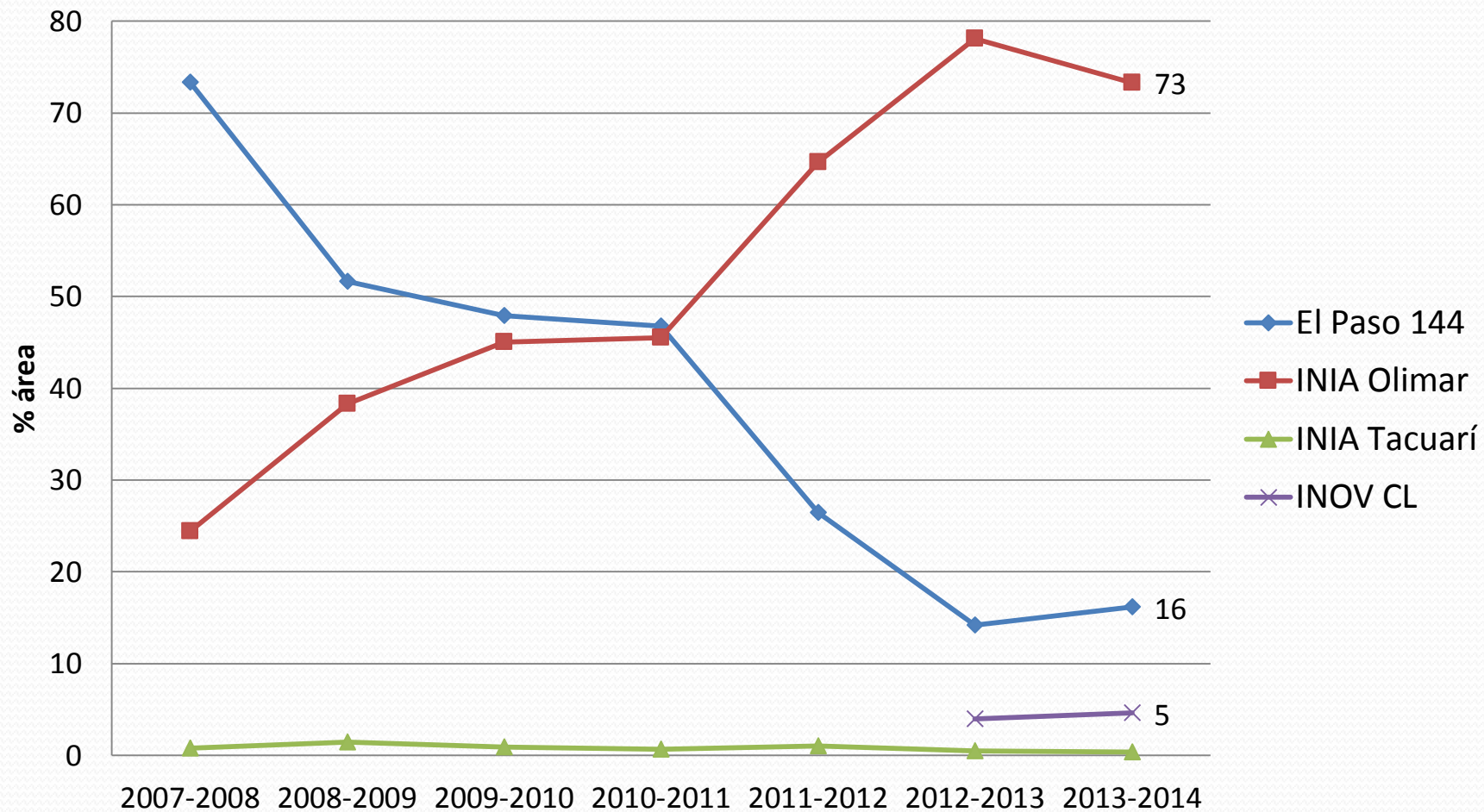
Área sembrada en el Este



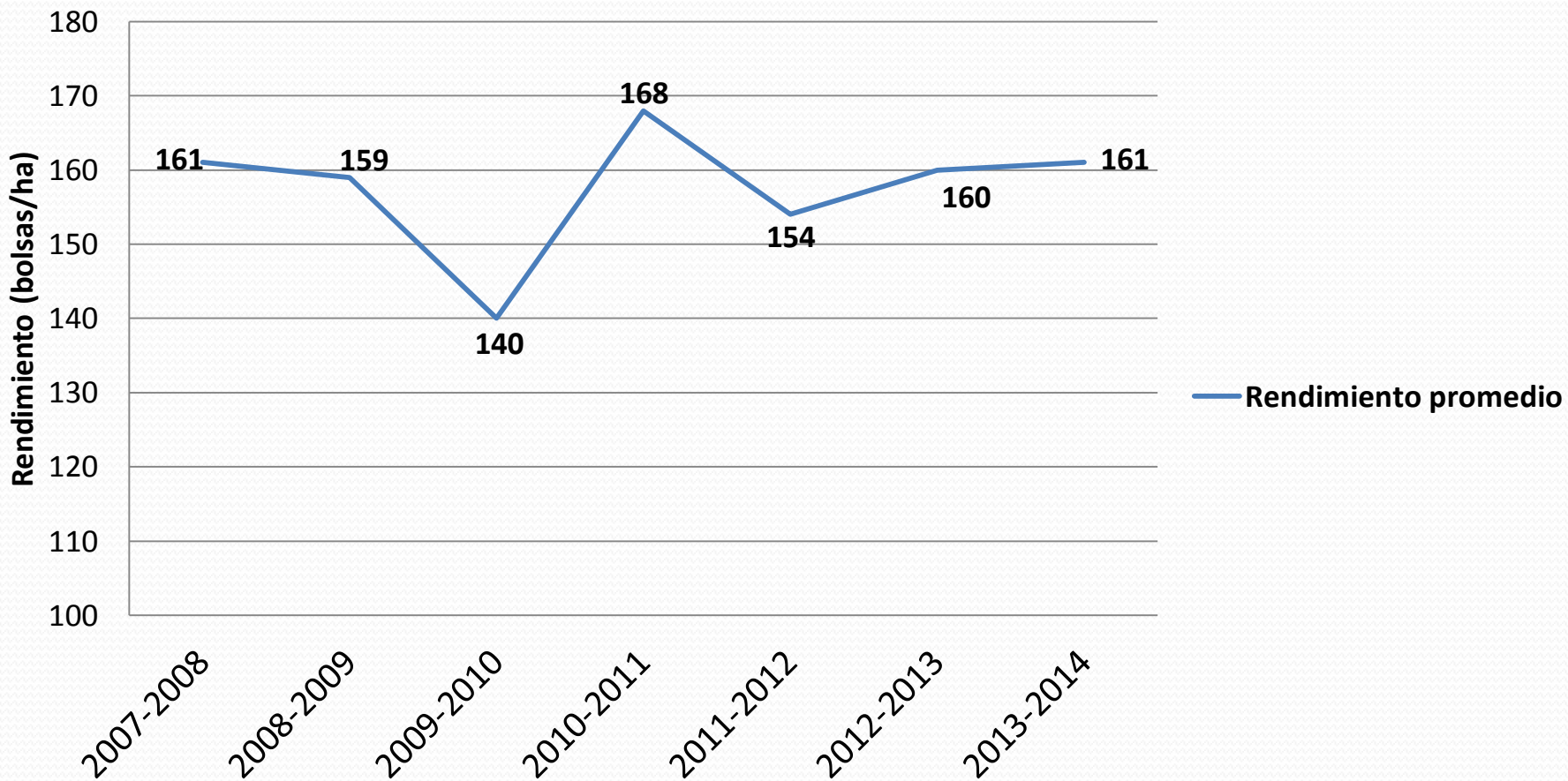
Área sembrada en el Centro



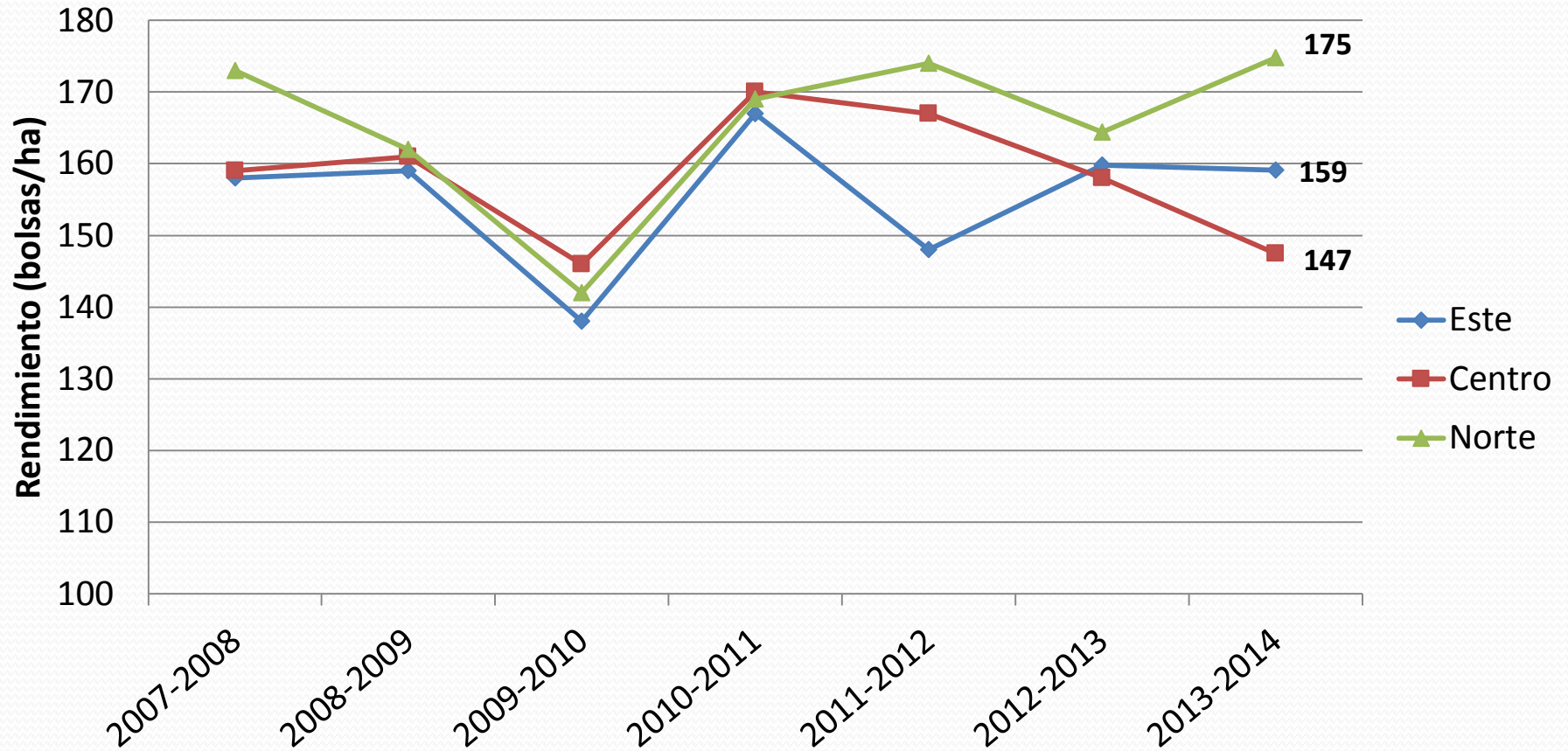
Área sembrada en el Norte



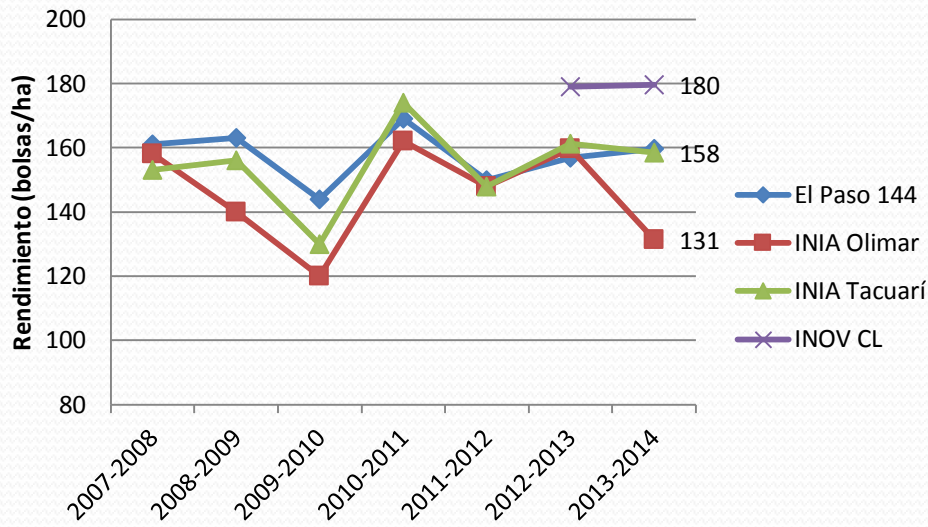
RENDIMIENTO



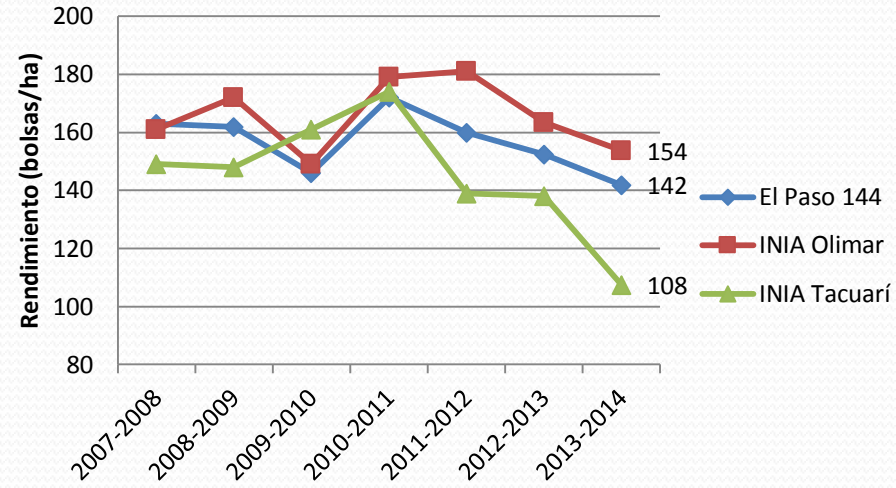
Rendimiento por región



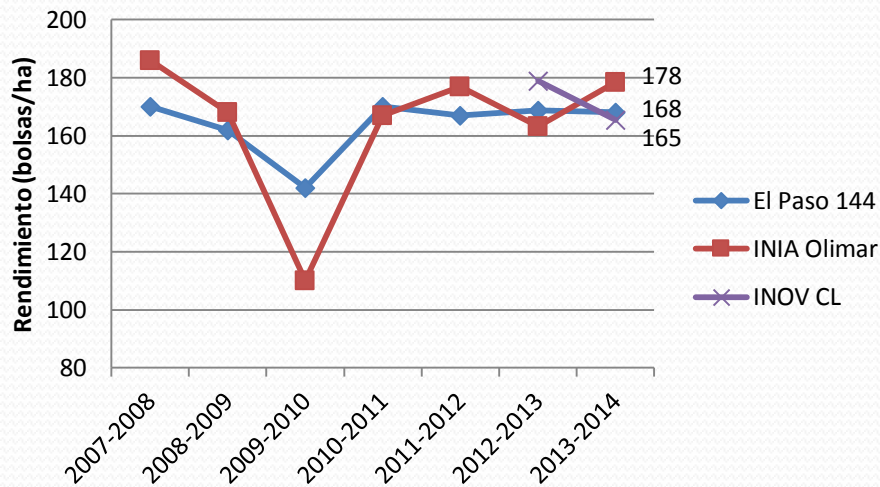
Rendimiento en el Este



Rendimiento en el Centro



Rendimiento en el Norte



A wide-angle photograph of a lush, golden rice field stretching to the horizon. The sky is filled with heavy, grey clouds, suggesting an overcast day. In the distance, a few small trees and a white building are visible on the horizon line. The text "MUCHAS GRACIAS" is overlaid in the center of the image in a bold, blue, sans-serif font.

MUCHAS GRACIAS